

# MICROSHOT

---

## HAND HELD SPOT TREATMENT APPLICATOR

The Microshot hand held gravity fed applicator provides growers with an extremely safe and accurate method of applying small measured doses of granular chemicals to individual plants.

**Part No.** (for ordering.)

630201 MICROSHOT – 8mm hole.  
( # 0. 1 to 0.5 gm.)

630202 MICROSHOT - 12mm hole  
( # 0.5 to 1.0 -m.)

# Dependent on product density

### SPECIFICATIONS

\* 1.0 Litre capacity, 1.0 Metre in length and pre-calibrated dose rates can vary from 0.1 gramme to 1.0 gramme per shot.

\* Suitable for the application of any granular insecticide, nematicide or herbicide.

\* Ideal for use in tobacco, vegetables and nursery crops.

\* Light weight, rigid P.V.C., sealed chemicals container, that doubles as a handle, provides the operator with additional safety.

\* Simple to operate, aim lance at target, press trigger to release the measured amount of granules.

\* Variety of outlets, including pipes, spouts and shields can be used to suit the individual crop / product requirements.



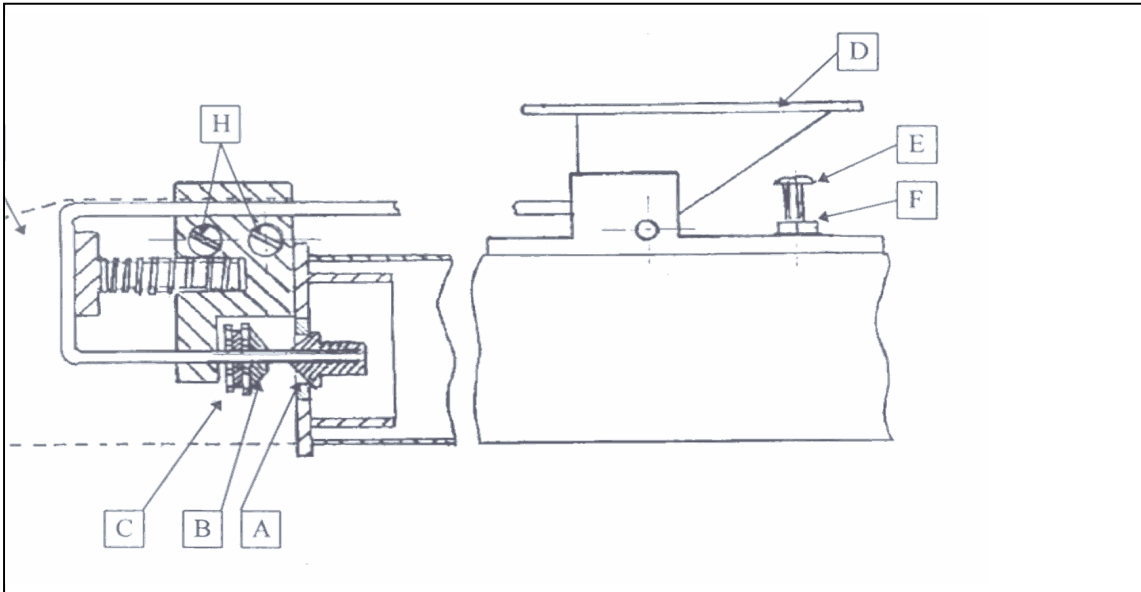
## HORSTINE FARMERY

---

1 COW LANE, UPTON, GAINSBOROUGH, LINCS., DN21 5PB.  
TEL: 01427 838383 FAX: 01427 838507

# MICROSHOT APPLICATOR

## CALIBRATION INSTRUCTIONS



- MICROSHOT APPLICATORS ARE MANUFACTURED WITH TWO SIZES OF METERING ORIFICE (A) 8mm and 12mm.

THESE TWO SIZES GIVE BASIC RANGES OF APPLICATION, AND RATES WILL VARY DEPENDING ON THE NATURE OF THE PRODUCT BEING APPLIED.

### SETTING

REMOVE THE ALUMINIUM DELIVERY SHROUD (G) BY UN SCREWING AND REMOVING THE TWO SCREWS AND NUTS (H). ADJUSTMENT OF THE DISTANCE BETWEEN THE TWO CONES WILL VARY THE APPLICATION RATE. THIS IS MADE BY ROTATING THE OUTER CONE (B). THIS OUTER CONE IS LOCKED IN PLACE WITH LOCKNUT (C). THIS ALTERS THE TRAVEL OF THE MECHANISM, AND CONSEQUENTLY THE APPLICATION RATE.

### NOTE!

TO PREVENT DAMAGE TO THE METERING HEAD BY EXCESSIVE PRESSURE ON THE METERING HANDLE (D) ADJUST THE SCREW (E) TO THE UNDERSIDE OF THE OPERATING HANDLE (D) AND LOCK IT IN PLACE WITH THE LOCKNUT (F) AFTER SETTING THE APPLICATION RATE.

### CALIBRATION

UNLESS EXTREMELY ACCURATE WEIGHING EQUIPMENT IS AVAILABLE. IT IS USUAL TO OPERATE THE UNIT 100 TIMES AND WEIGH THE TOTAL PRODUCT. THEN DIVIDE THE WEIGHT BY 100 TO GIVE THE REQUIRED DOSE PER SHOT.

**NOTE!** IF IT IS FOUND ON VERY LOW RATES, WHERE ADJUSTMENTS HAVE BEEN MADE AND THERE IS VERY LITTLE TRIGGER MOVEMENT, BECAUSE THE METERING CONES ARE SO CLOSE TOGETHER AND THE UNIT JAMS WITH CHEMICAL, TRY RESETTING THE UNIT BY BACKING OFF THE OUTER CONE AND LOCKNUT (B & C) AND MAKE THE ADJUSTMENT OF THE INNER CONE MOVEMENT ON THE TRIGGER SCREW STOP (E). TO ACHIEVE THE DESIRED RATE.

INSTRUCTIONS PART NO. 032035

ISSUE:- C

DATE:- 20.11.03